

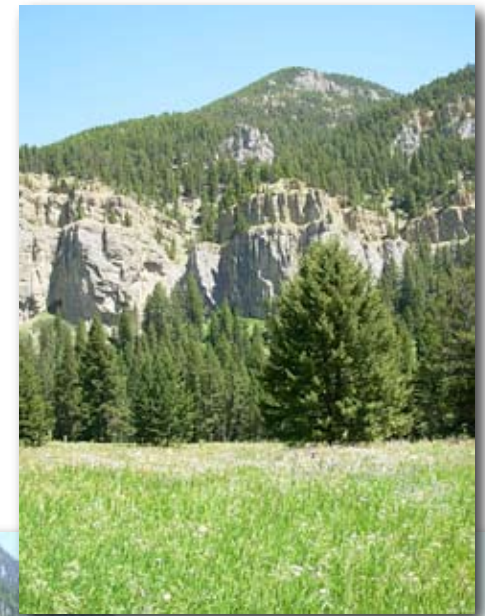


Gallatin River Property, COS 993

\$1,215,000

Big Sky

Sotheby's
INTERNATIONAL REALTY



This is truly a rare and one-of-a-kind offering in the majestic Gallatin Canyon. 5.1 acres, gently sloping to the Gallatin River with river frontage on both sides. Across the river is US Forest Service with access to hundreds of acres of outdoor paradise. The lot can be divided or build your own dream home by the river. Conveniently located 25 miles from Bozeman and 15 minutes from Big Sky. Fly fishing, rafting, kayaking, hiking, horseback riding, world class skiing, golfing, etc. all at your fingertips.

Gallatin River Property
Gallatin Gateway, Montana 59730

\$1,215,000

Available to show anytime.

Big Sky

Sotheby's
INTERNATIONAL REALTY

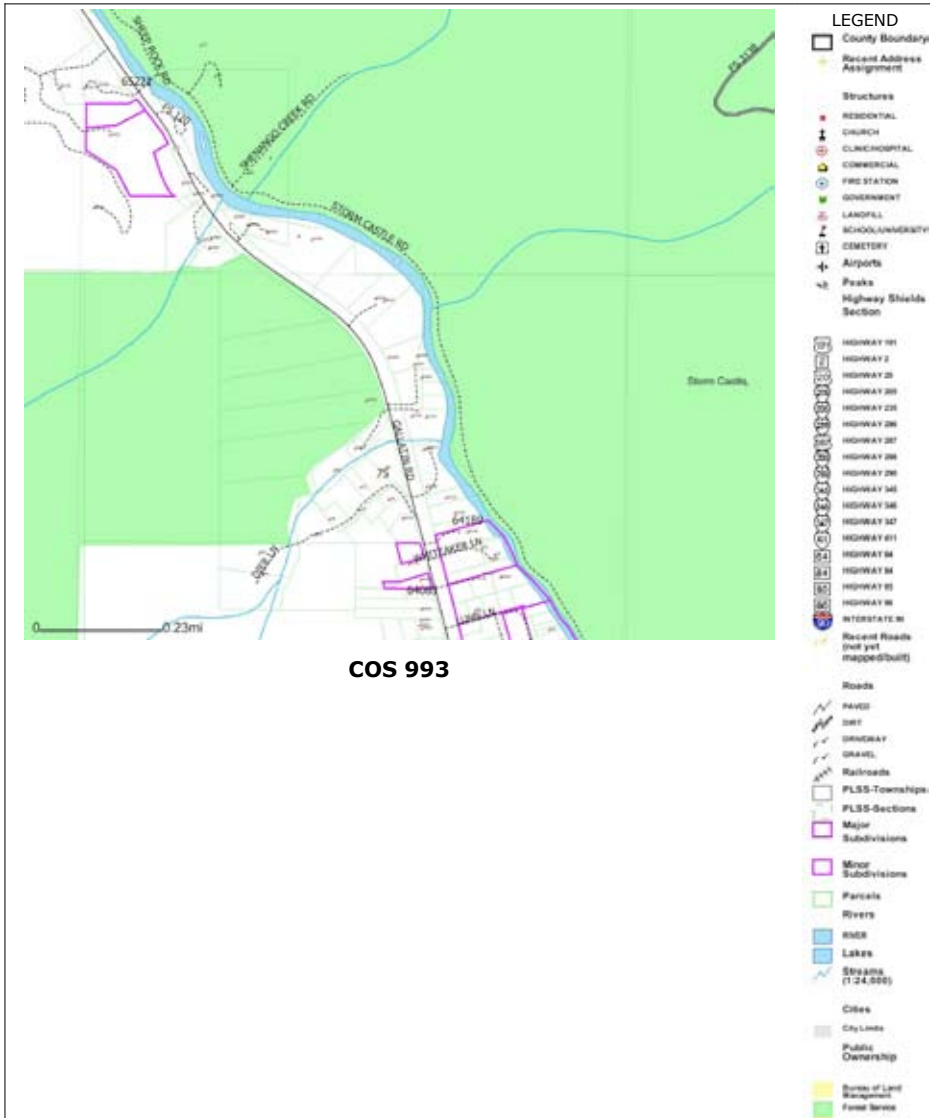
Anne Staudt

t 406.539.1552 t 406.995.2211

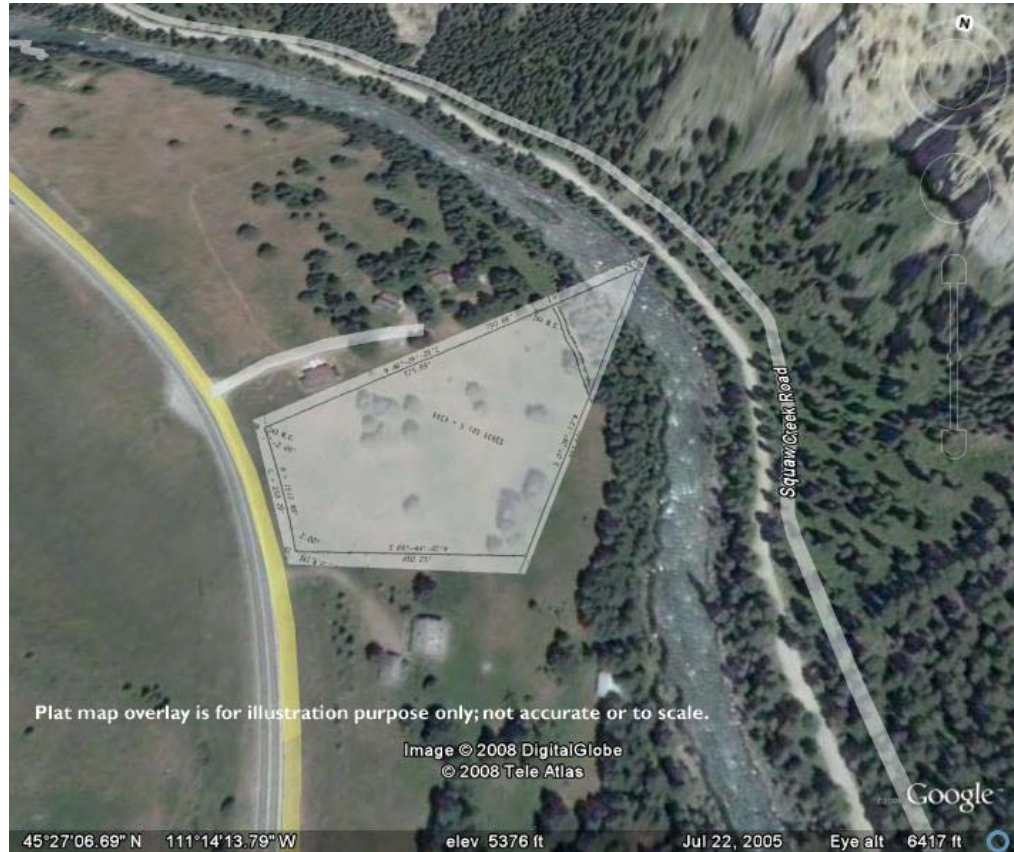
anne.staudt@sothebysrealty.com

Big Sky Sotheby's International Realty

19 Meadow Village Drive, P.O. Box 160056, Big Sky, MT 59716



COS 993



Plat map overlay is for illustration purpose only; not accurate or to scale.

Image © 2008 DigitalGlobe
© 2008 Tele Atlas

45°27'06.69" N 111°14'13.79" W elev 5376 ft Jul 22, 2005 Eye alt 6417 ft

Big Sky

Sotheby's
INTERNATIONAL REALTY

2008 Taxes: \$552.20
MLS: 142659

Anne Staudt
t 406.539.1552 t 406.995.2211
anne.staudt@sothebysrealty.com
Big Sky Sotheby's International Realty
19 Meadow Village Drive, P.O. Box 160056, Big Sky, MT 59716

This material is based upon information which we consider reliable, but because it has been supplied by third parties, we cannot represent that it is accurate or complete, and it should not be relied upon as such. This offering is subject to errors, omissions and changes including price or withdrawal without notice. An Equal Opportunity Company, Equal Housing Opportunity. Each Office is Independently Owned and Operated. If your property is listed with a real estate broker, please disregard. It is not our intention to solicit the offerings of other real estate brokers. We are happy to work with them and cooperate fully.